

AREA MAP INSET 1"=2640'

**BUILDING KEY**

- |                               |                                  |
|-------------------------------|----------------------------------|
| 1. Bulk Fuel Storage          | 10. Old School                   |
| 2. Generator                  | 11. Bulk Fuel                    |
| 3. Subsistence Processing     | 12. New School                   |
| 4. Store/Residence            | 13. Old Clinic                   |
| 5. Community Hall/Port Office | 14. Fire Hall                    |
| 6. Church                     | 15. New Clinic                   |
| 7. Water Treatment            | 16. Garden                       |
| 8. Water Storage              | 17. Playground                   |
| 9. Emergency Shelter          | 18. Remains of Cannery Buildings |



**MAP NOTES**  
 This map was prepared by the Lake and Peninsula Borough in cooperation with the Alaska Department of Community and Economic Development (CDED) using funding from the Alaska Coastal Management Program. The Lake and Peninsula Borough contracted with Global Positioning Services, Inc. in October of 2003 to prepare the map.

This map should not be construed as a survey. On-site surveys should be conducted prior to engineering or construction.

This map was compiled to meet horizontal and vertical accuracy in accordance with national map accuracy standards.

Property and utility information has been generated from readily available sources with limited accuracy checks. Property information is not intended to represent a title search of the Recorder's Office record. Utility location is approximate and shows only the main lines. Generally, the information is current as of December 2003.

The Alaska Native Tribal Health Consortium provided sanitation facility records.

This map is based on photography acquired on June 1, 2001, at a nominal scale of 1 in = 800 ft.

Kodiak Mapping Inc. prepared the Orthophoto and topographic mapping.

The orthophoto is an aerial photo which has been corrected, by rectification to ground control stations, to remove distortions and warpage due to ground topography and aircraft tilt and trim.

**HORIZONTAL AND VERTICAL CONTROL**  
 The map coordinates are assumed, utilizing the recovered BLM ANCSA 14(c) Corner 20, Tract A as the basis of coordinates at N = 60,000 and E = 60,000. The basis of bearing for this map is the calculated bearing of the line between Corner 28 and recovered Corner 31 of Tract A, from the plat of the ANCSA 14(c) survey. The elevations are assumed, but are based approximately (within plus or minus 1.6 feet) on mean high water datum from information contained on the plat of Alaska Tidelands Survey No. 185.

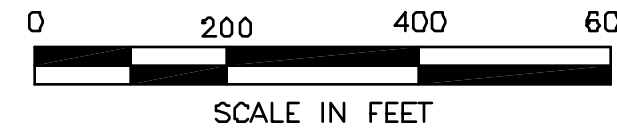
The contours were prepared at two (2) foot contour intervals with index contours every fifty (50) feet.

**Community Map  
 IVANOF BAY**

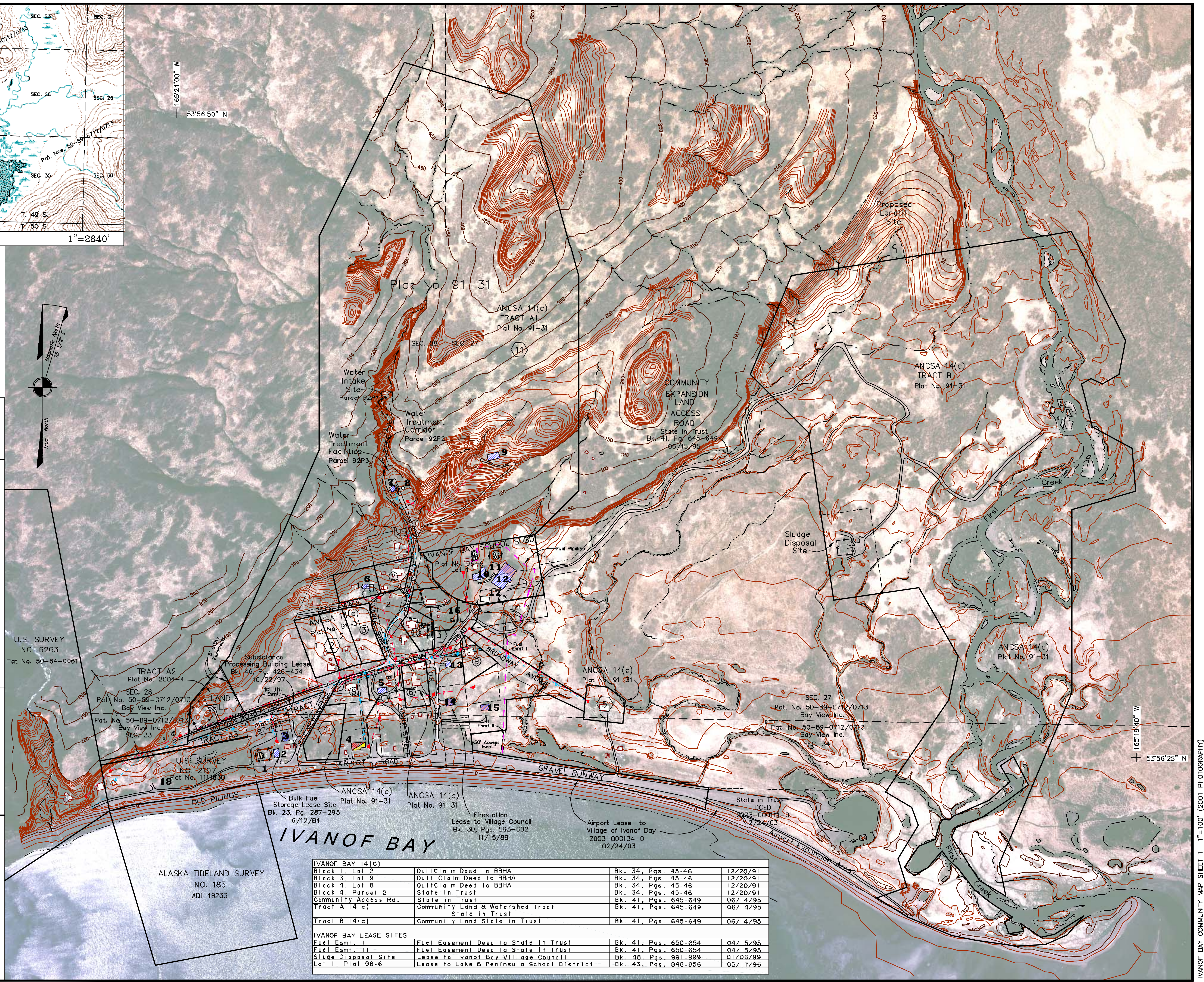
55° 54' 10" N 159° 29' 00" W (NAD 83)  
 Approximate Elevation: 10'  
 Township 49 South, Range 66 West, S.M., AK  
 U.S.G.S. Quadrangle "STEPOVAK BAY D-5," Alaska  
 ALEUTIAN ISLANDS RECORDING DISTRICT

**LEGEND**

- |                      |                                 |
|----------------------|---------------------------------|
| Residential Building | Land Use Lines from Plat 91-30  |
| Commercial Building  | Unsurveyed Lines                |
| Public Building      | Lot Identification (Plat 91-30) |
| Edge of Water        | Ivanof Bay Shore Homes Subd.    |
| Electric Line w/pole |                                 |
| Water Line           |                                 |



SCALE: 1"=200'  
 Date of Photography: June 1, 2001  
 Magnetic Declination by U.S.G.S. Geomag Program using AK-2000.COF model as of August 1, 2003. SHEET 1 of 2



IVANOF BAY 14(c) Block 1, Lot 2	Ouil Claim Deed to BBHA	Bk. 34, Pgs. 45-46	12/20/91
Block 3, Lot 9	Ouil Claim Deed to BBHA	Bk. 34, Pgs. 45-46	12/20/91
Block 4, Lot 8	Ouil Claim Deed to BBHA	Bk. 34, Pgs. 45-46	12/20/91
Block 4, Parcel 2	State in Trust	Bk. 34, Pgs. 45-46	12/20/91
Community Access Rd.	State in Trust	Bk. 41, Pgs. 645-649	06/14/95
Tract A 14(c)	Community Land & Watershed Tract State in Trust	Bk. 41, Pgs. 645-649	06/14/95
Tract B 14(c)	Community Land State in Trust	Bk. 41, Pgs. 645-649	06/14/95
IVANOF BAY LEASE SITES			
Fuel Esmt. I	Fuel Easement Deed to State in Trust	Bk. 41, Pgs. 650-654	04/15/95
Fuel Esmt. II	Fuel Easement Deed to State in Trust	Bk. 41, Pgs. 650-654	04/15/95
Sludge Disposal Site	Lease to Ivanof Bay Village Council	Bk. 48, Pgs. 991-999	01/05/99
Lot 1, Plat 96-6	Lease to Lake & Peninsula School District	Bk. 43, Pgs. 848-856	05/17/96

IVANOF BAY COMMUNITY MAP SHEET 1 1"=100' (2001 PHOTOGRAPHY)