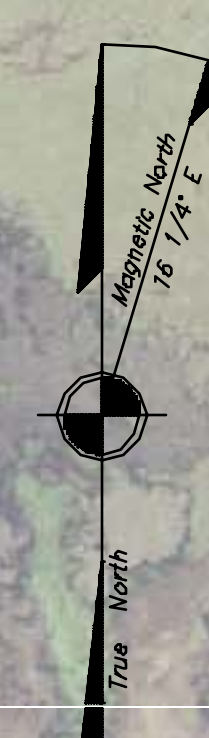


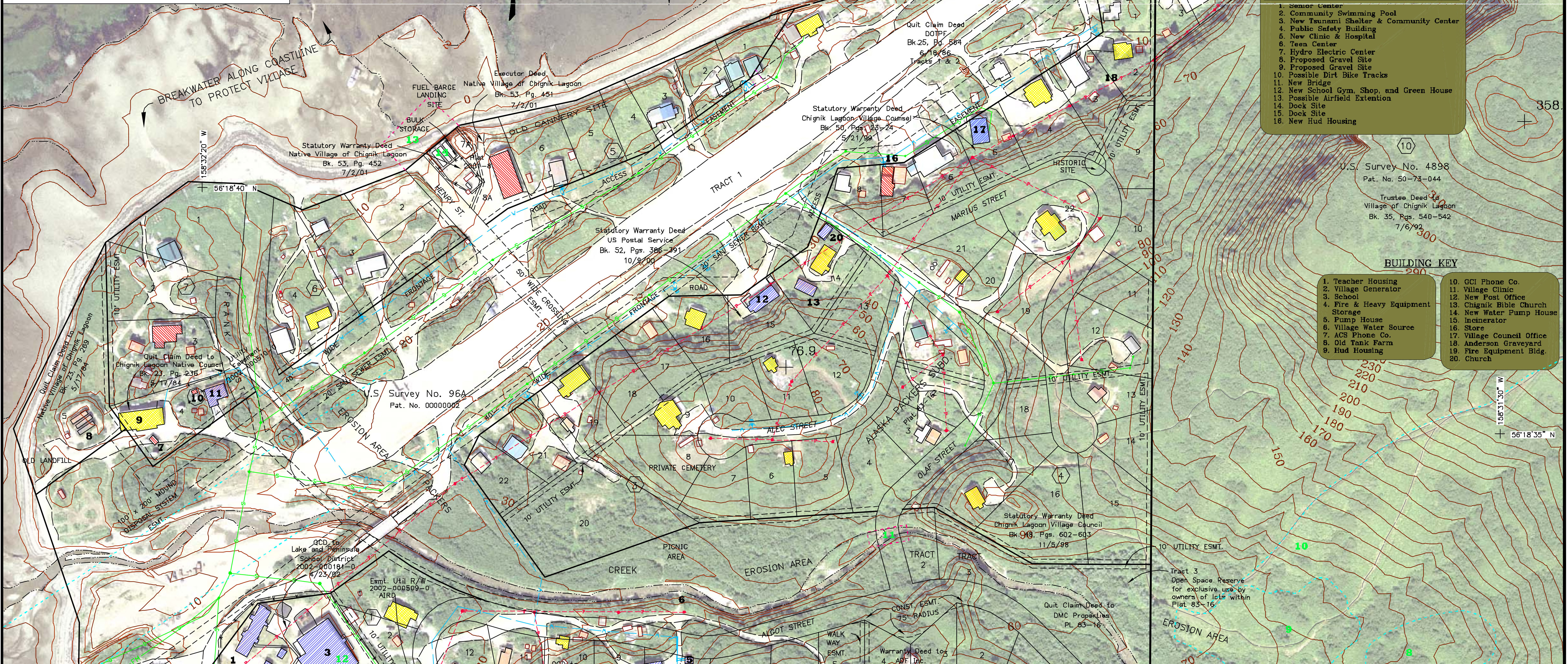
Legend & Notes

- PROPOSED INFRASTRUCTURE IMPROVEMENTS
- PROPOSED COMMUNITY DEVELOPMENT AREAS

MAP NOTES
 This map was prepared by the Lake and Peninsula Borough in cooperation with the Alaska Department of Community and Economic Development (DCED) using funding from the Alaska Coastal Management Program, U.S. Bureau of Indian Affairs Transportation Planning, and funding from the Initiative for Accelerated Infrastructure Development (IAID). The IAID is supported by grants from the Small Communities, USDA Rural Development, Alaska Department of Transportation and Public Facilities and DCED. The Lake and Peninsula Borough contracted with Global Positioning Services, Inc. in June of 2002 to prepare the map.
 The boundaries and areas shown are outlines and have no existing surveys or records attributed to them.



CHIGNIK LAGOON



- ### FUTURE COMMUNITY DEVELOPMENT
1. Senior Center
 2. Community Swimming Pool
 3. New Tsunami Shelter & Community Center
 4. Public Safety Building
 5. New Clinic & Hospital
 6. Teen Center
 7. Hydro Electric Center
 8. Proposed Gravel Site
 9. Proposed Gravel Site
 10. Possible Dirt Bike Tracks
 11. New Bridge
 12. New School Gym, Shop, and Green House
 13. Possible Airfield Extension
 14. Dock Site
 15. Dock Site
 16. New Hud Housing

- ### BUILDING KEY
- | | |
|-----------------------------------|----------------------------|
| 1. Teacher Housing | 10. GCI Phone Co. |
| 2. Village Generator | 11. Village Clinic |
| 3. School | 12. New Post Office |
| 4. Fire & Heavy Equipment Storage | 13. Chignik Bible Church |
| 5. Pump House | 14. New Water Pump House |
| 6. Village Water Source | 15. Incinerator |
| 7. ACS Phone Co. | 16. Store |
| 8. Old Tank Farm | 17. Village Council Office |
| 9. Hud Housing | 18. Anderson Graveyard |
| | 19. Fire Equipment Bldg. |
| | 20. Church |

COMMUNITY PLANNING MAP CHIGNIK LAGOON

56° 18' 30" N 158° 32' 15" W (NAD 83)
 Approximate Elevation: 22'
 Township 45 South, Range 59 West, S.M., AK
 U.S.G.S. Quadrangle "CHIGNIK B-2," Alaska
 ALEUTIAN ISLAND RECORDING DISTRICT

SEE SHEET 2 FOR DETAILED COMMUNITY MAP

SCALE IN FEET

SCALE: 1"=100'
 Date of Photography: July 31, 2002
 Magnetic Declination computed by U.S.G.S. Geomag Program using AK-2000.COF model as of August 1, 2002.

CHIGNIK LAGOON COMMUNITY PLANNING MAP SHEET 2 1"=200' (2002 PHOTOGRAPHY)